

# My New Project

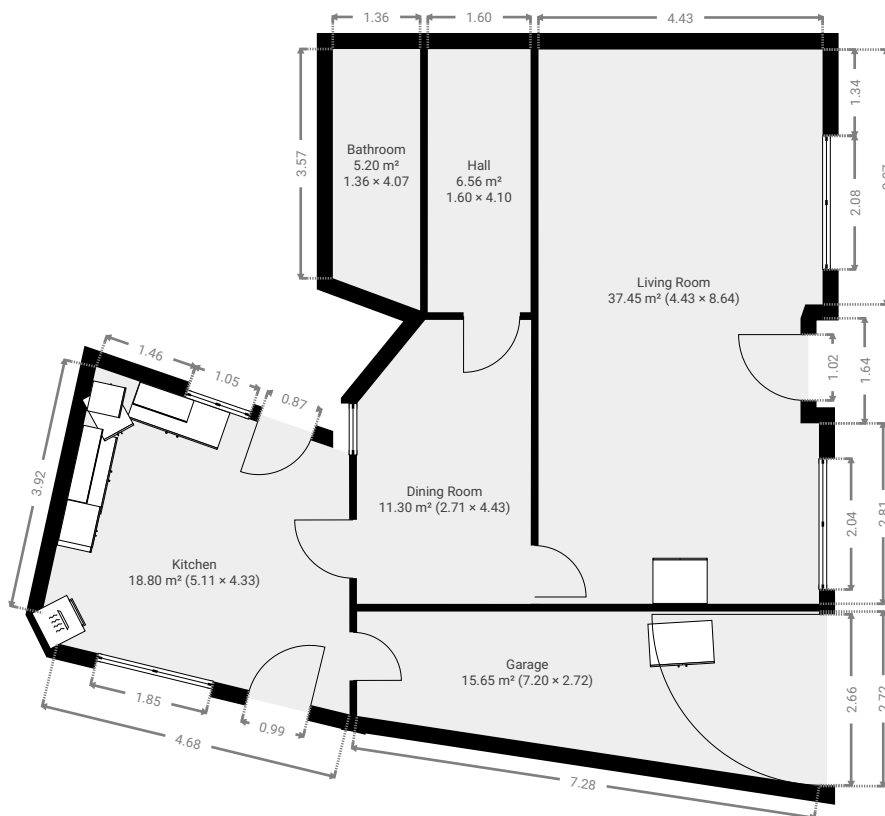
Heikruisesteenweg 11, 1670 Pepingen

TOTAL AREA: 158.80 m<sup>2</sup> • LIVING AREA: 143.15 m<sup>2</sup> • FLOORS: 2 • ROOMS: 11



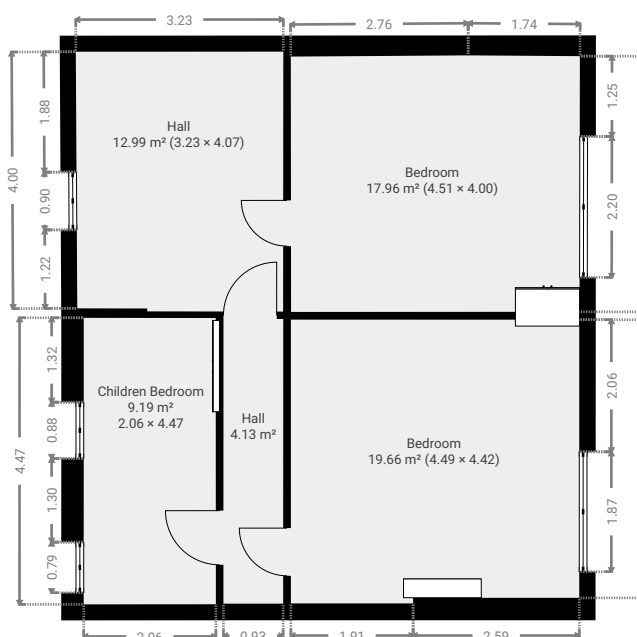
## ▼ Ground Floor

TOTAL AREA: 94.92 m<sup>2</sup> • LIVING AREA: 79.27 m<sup>2</sup> • ROOMS: 6



## ▼ 1st Floor

TOTAL AREA: 63.88 m<sup>2</sup> • LIVING AREA: 63.88 m<sup>2</sup> • ROOMS: 5



THIS FLOOR PLAN IS PROVIDED WITHOUT WARRANTY OF ANY KIND. SENSOPIA DISCLAIMS ANY WARRANTY INCLUDING, WITHOUT LIMITATION, SATISFACTORY QUALITY OR ACCURACY OF DIMENSIONS.

0 1 2 3 4 5m  
1:118  
Page 1/1