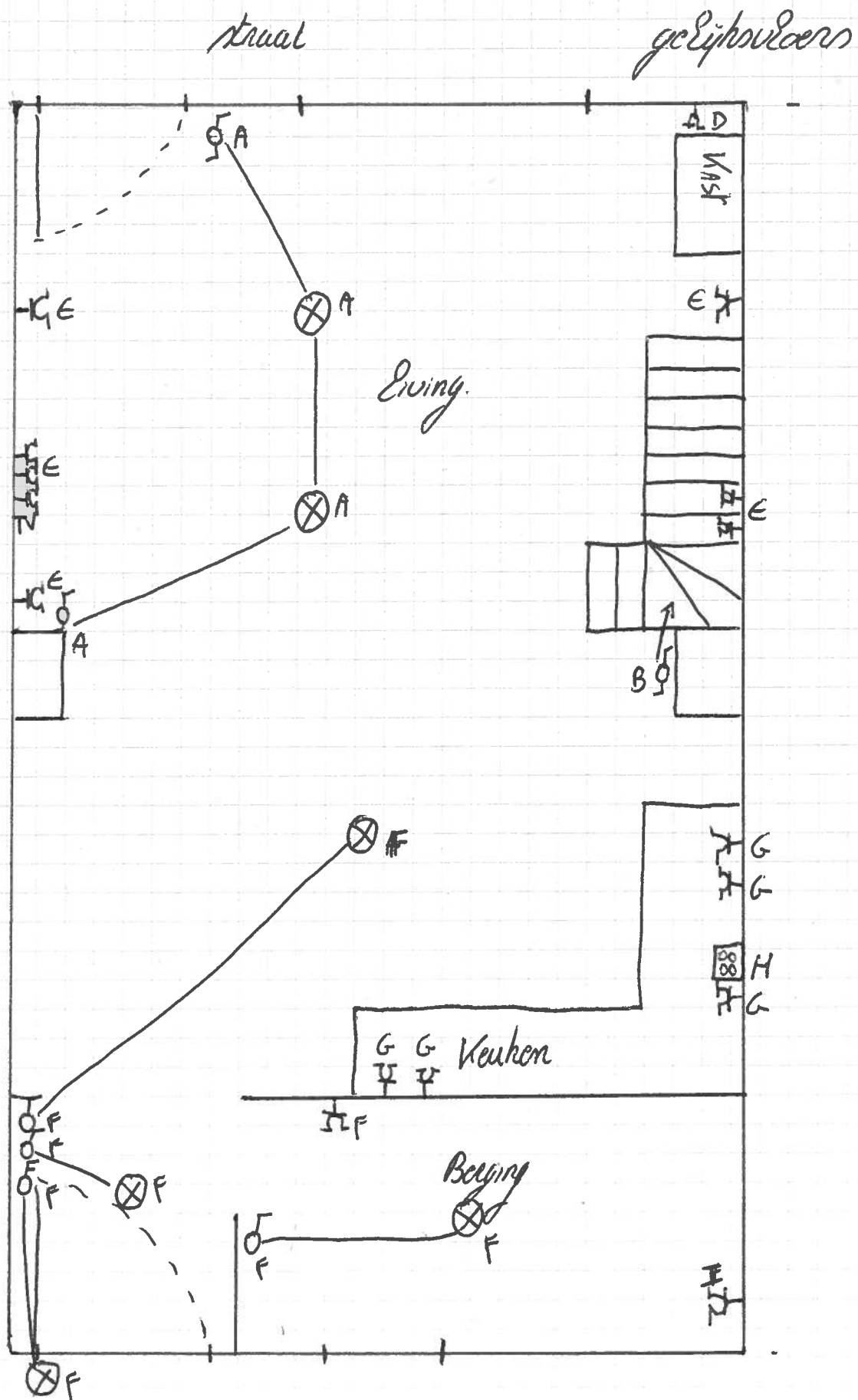


oude steenweg 88, geraardsbergen





overtreenweg 86. genaandbergen.

40 A  
300 mA

A verlichting 2.ing

B draaphall

C boeder

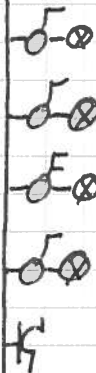
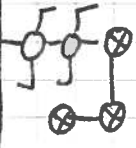
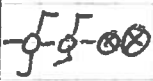
D versterker 2.ing

E kopcontact 2.ing

F verlichting berging + kop

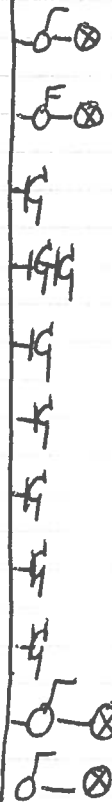
G kopcontact 2.ing

H hoek voor

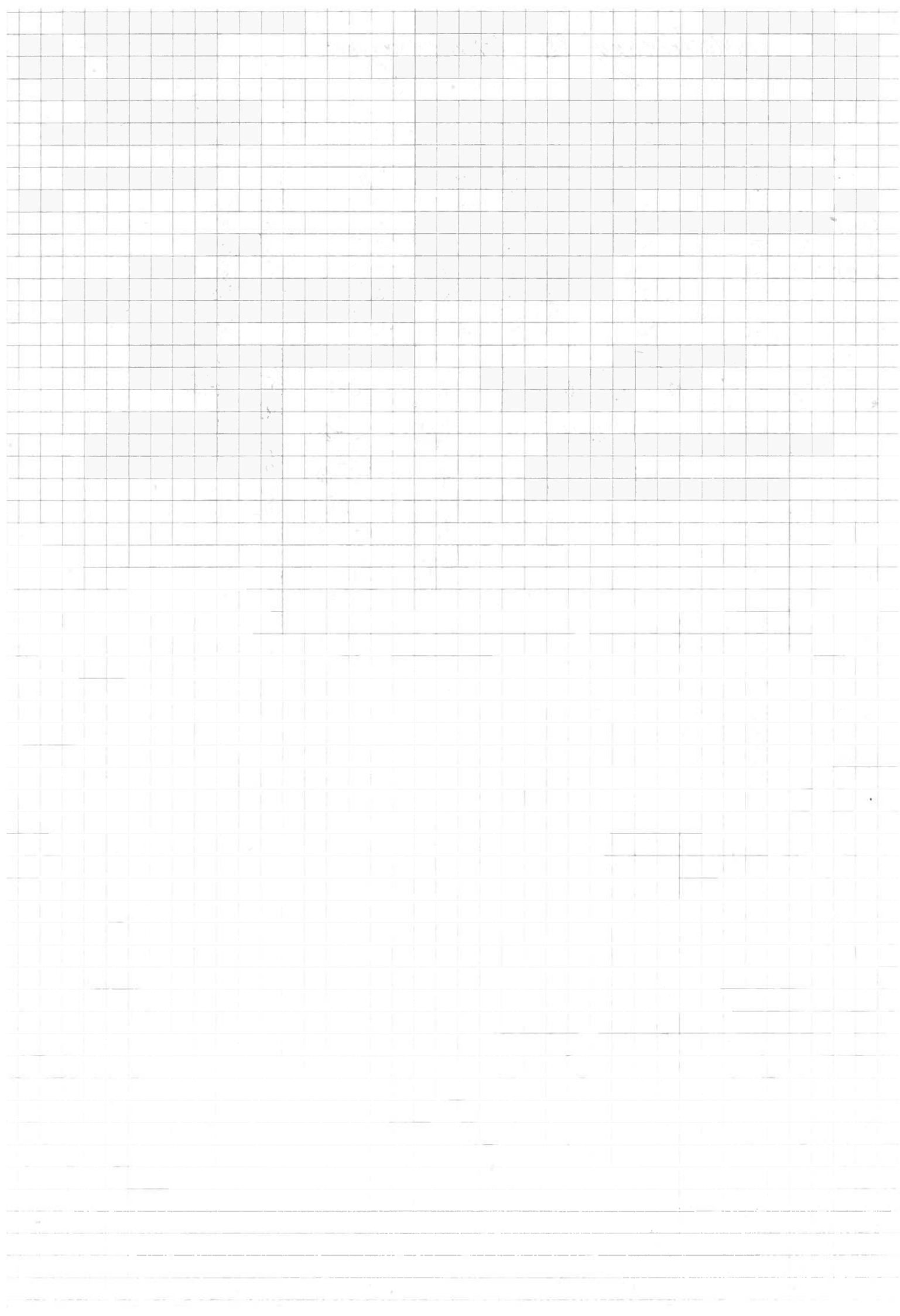


Tuor machine

Bachkamer + boven



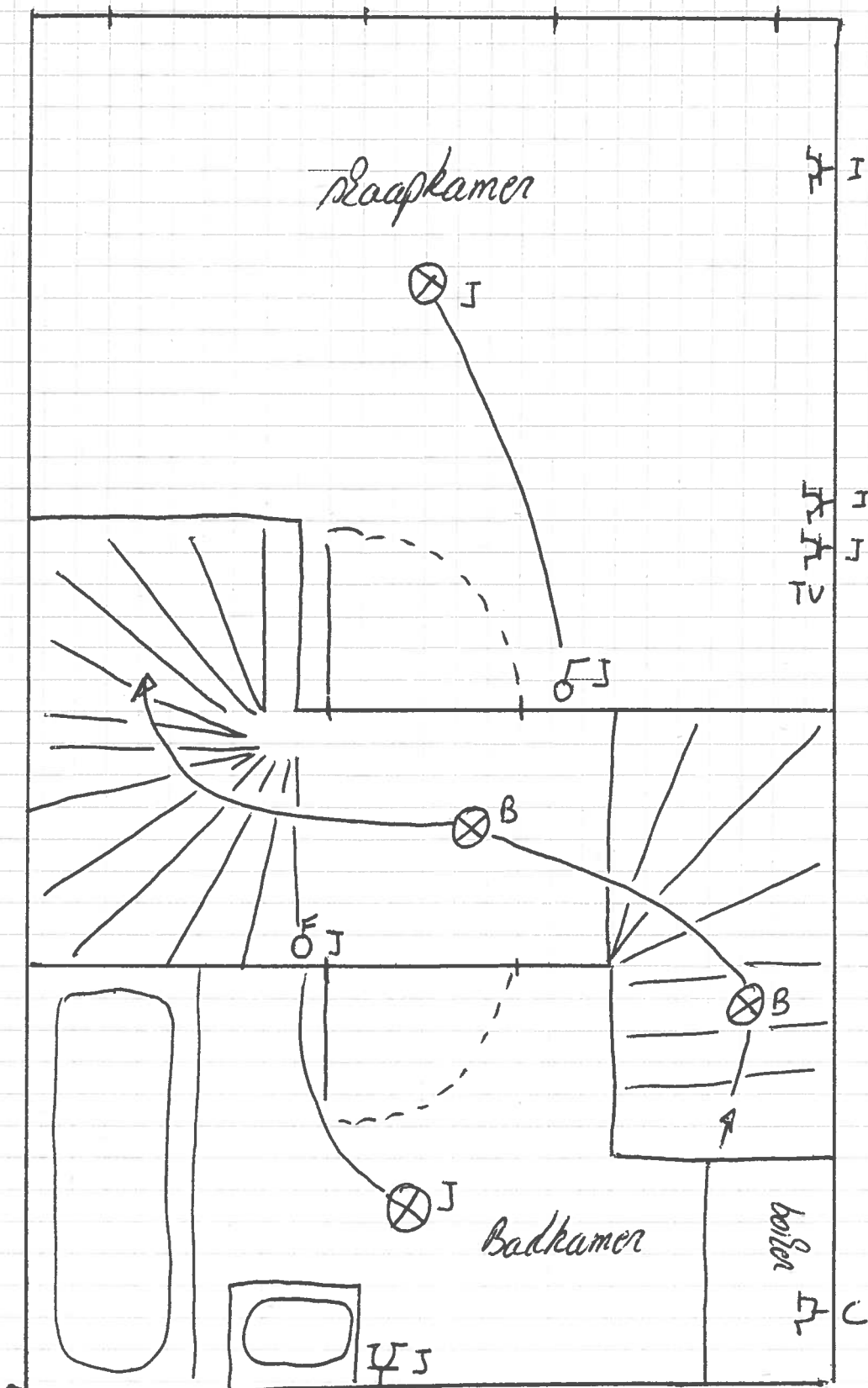
40 A  
30 mA



oude steenweg 87, geraardsbergen.

kraat

1<sup>de</sup> verdiep.



1991/12

oude steenweg 87, geraantbergen.  
straat

dak verdiep

