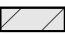








Composition des murs existants

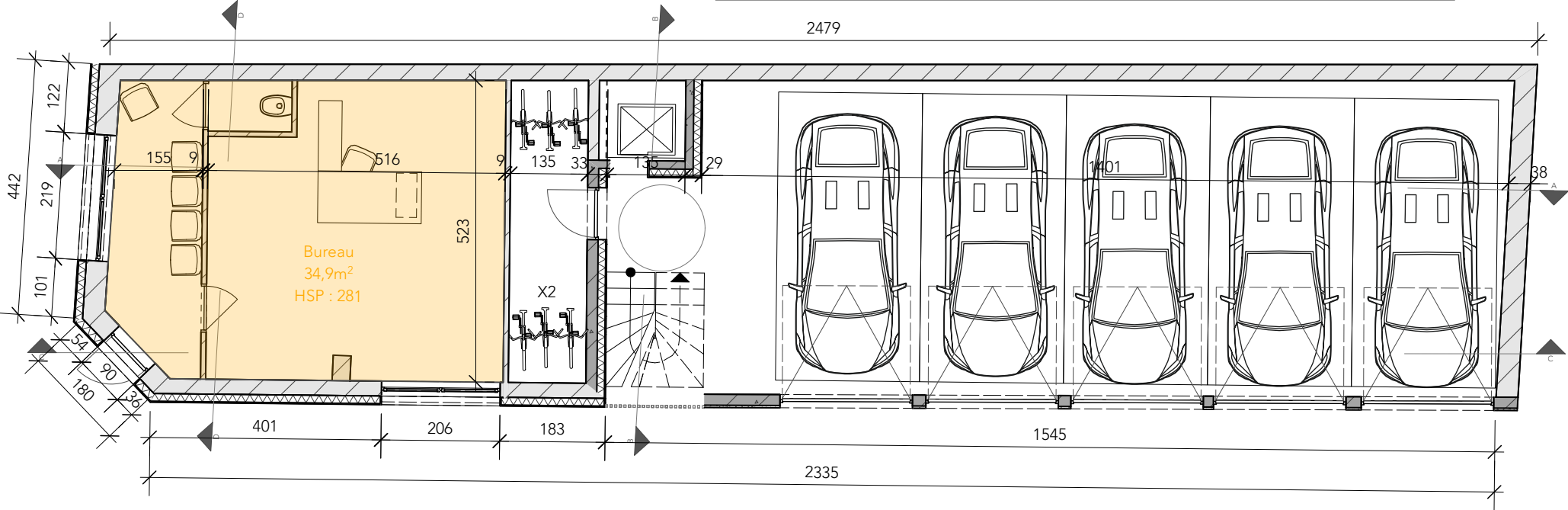
	Mur extérieur Monomur 28 à 40cm		Mur intérieur Briques 10 à 22cm
---	------------------------------------	---	------------------------------------

Légende :

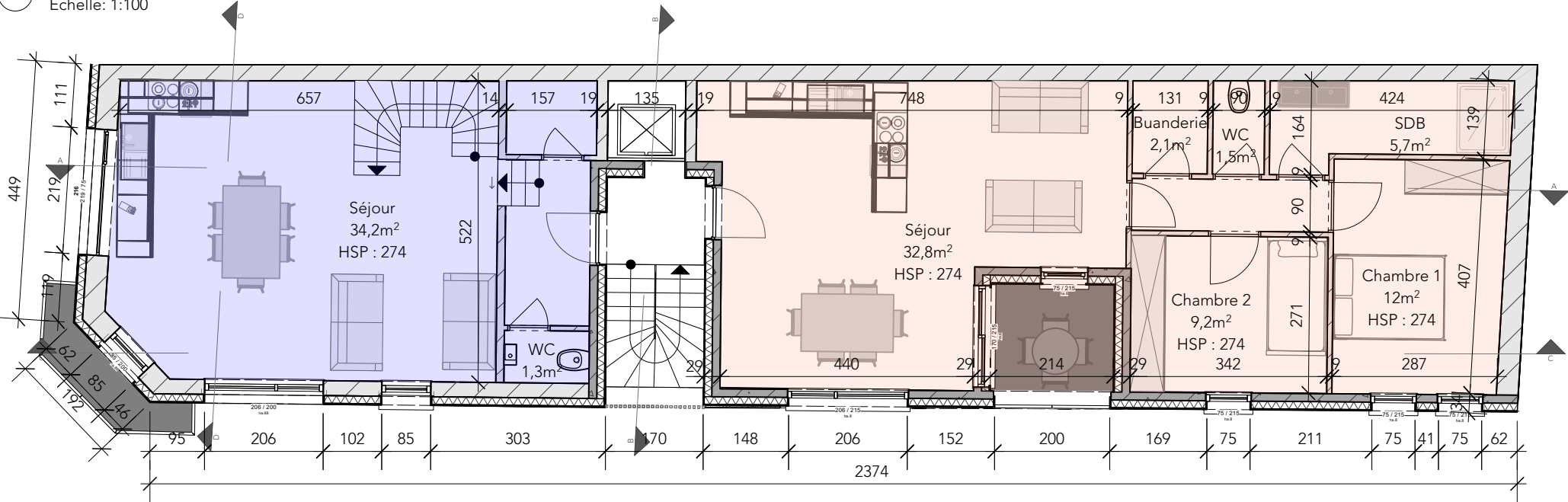
	Appartement 1 : 84,8 m²
	Appartement 2 : 72,8 m²

Composition des murs projetés

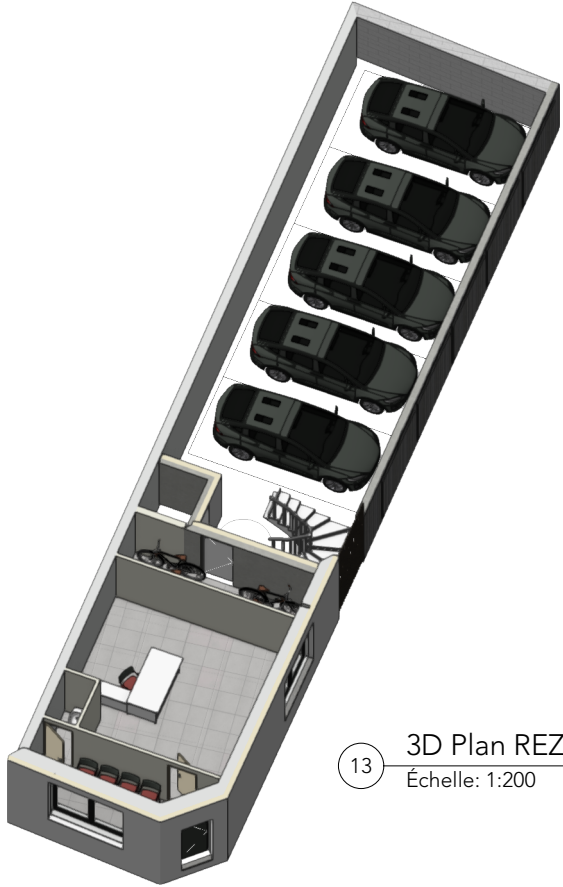
	Mur extérieur crépis : Crépis 2cm Isolation EPS 14cm Bloc béton léger 14/19cm Plafonnage 10mm		Mur extérieur bardage : Bardage bois dur style padouk Lattage/contrelattage 4cm Isolation PUR 14cm Bloc silicocalcaire 14cm Plafonnage
	Mur intérieur : Plafonnage 10mm Bloc béton léger 10cm Plafonnage 10mm		Paroi intérieure : OSB 15mm & plaque de plâtre 9mm Métal stud 5cm + isolation phonique Plaque de plâtre 12,5mm



12 Plan REZ
Échelle: 1:100



14 Plan REZ+1
Échelle: 1:100



13 3D Plan REZ
Échelle: 1:200



15 3D Plan REZ+1
Échelle: 1:200