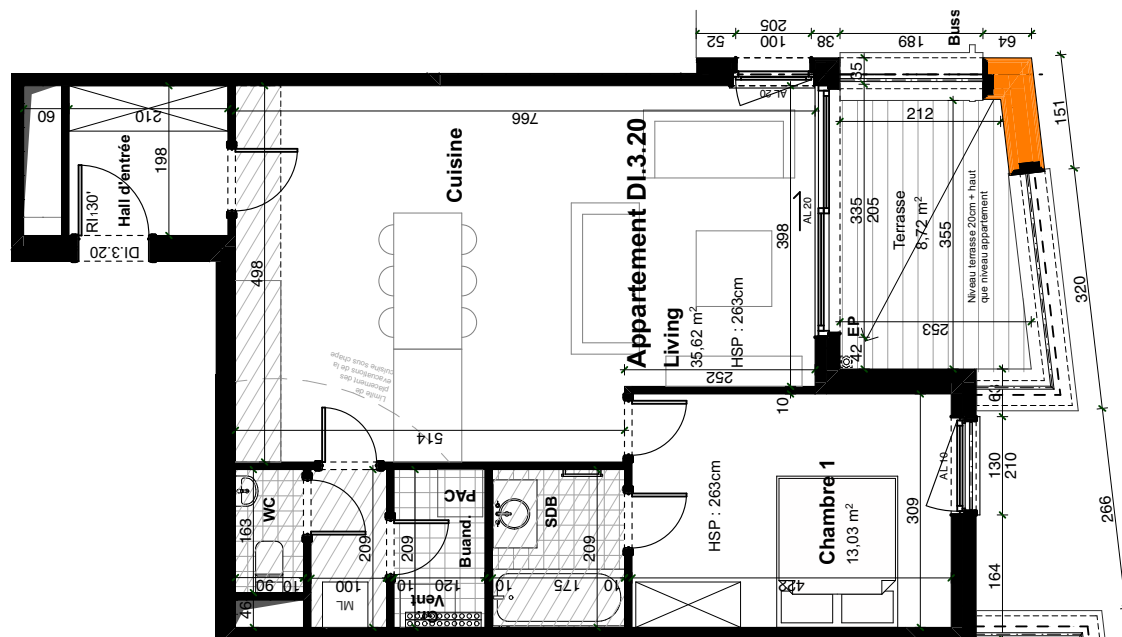
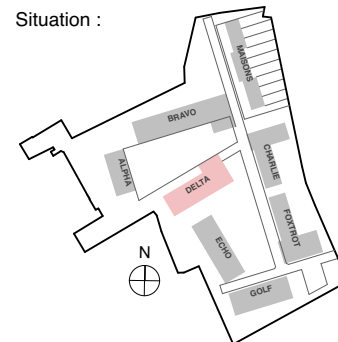


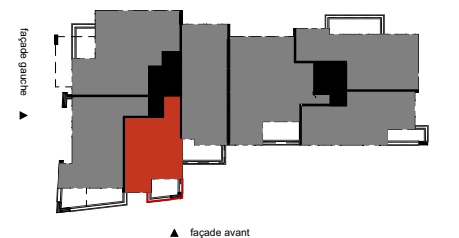
| APPARTEMENT D.I.3.20 | |
|----------------------|----------------------|
| SURFACE BRUTE | 73,74 m ² |
| SÉJOUR + CUISINE | 35,62 m ² |
| CHAMBRE 1 | 13,03 m ² |
| TERRASSE 1 | 8,54 m ² |



Situation :



▼ façade arrière



▲ façade avant

façade avant

façade droite