

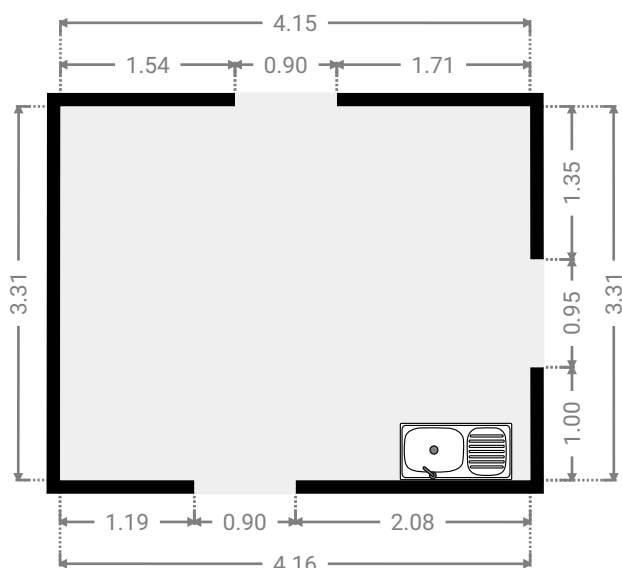
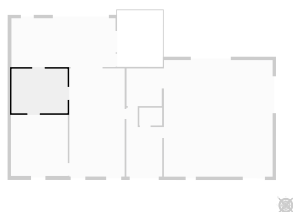
s25332

ENVOYÉ PAR
Opérateur 1 Servisco

CRÉÉ LE
2025-05-15

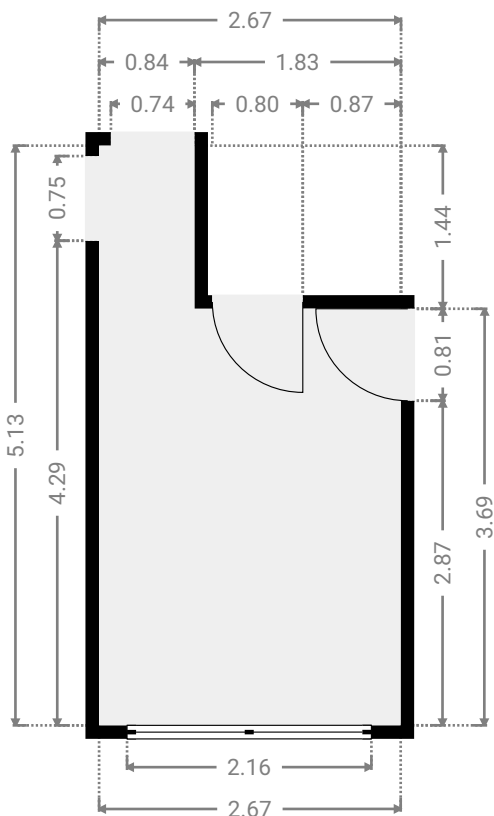
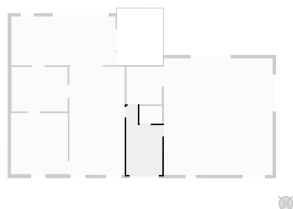
Surface totale 353.57 m²	Étages 4	Pièces 17	Salles de bain 2
------------------------------------	--------------------	---------------------	----------------------------

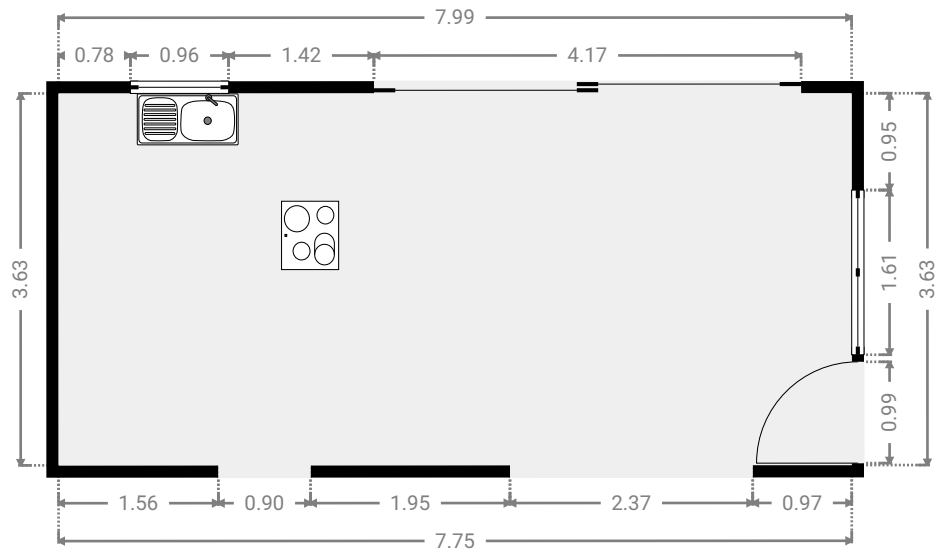
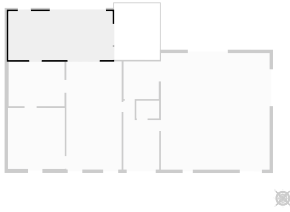




▼ **Buanderie**
Rez-de-chaussée

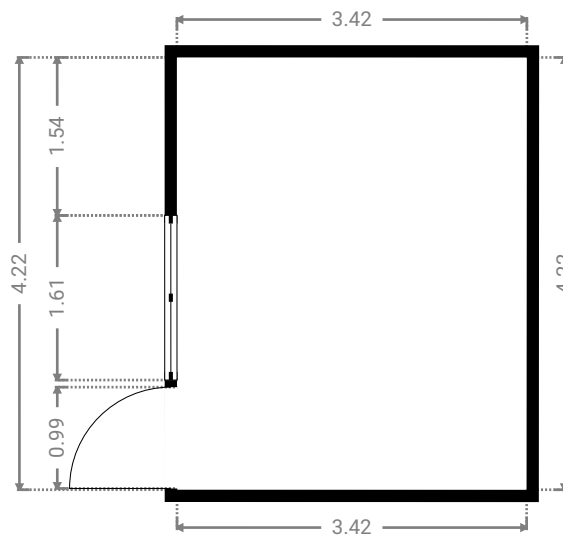
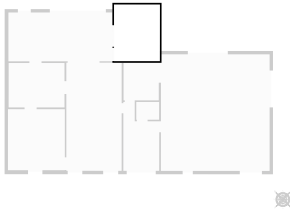
LARGEUR : 2.67 m • LONGUEUR : 5.13 m
SURFACE : 11.06 m² • PÉRIMÈTRE : 15.60 m

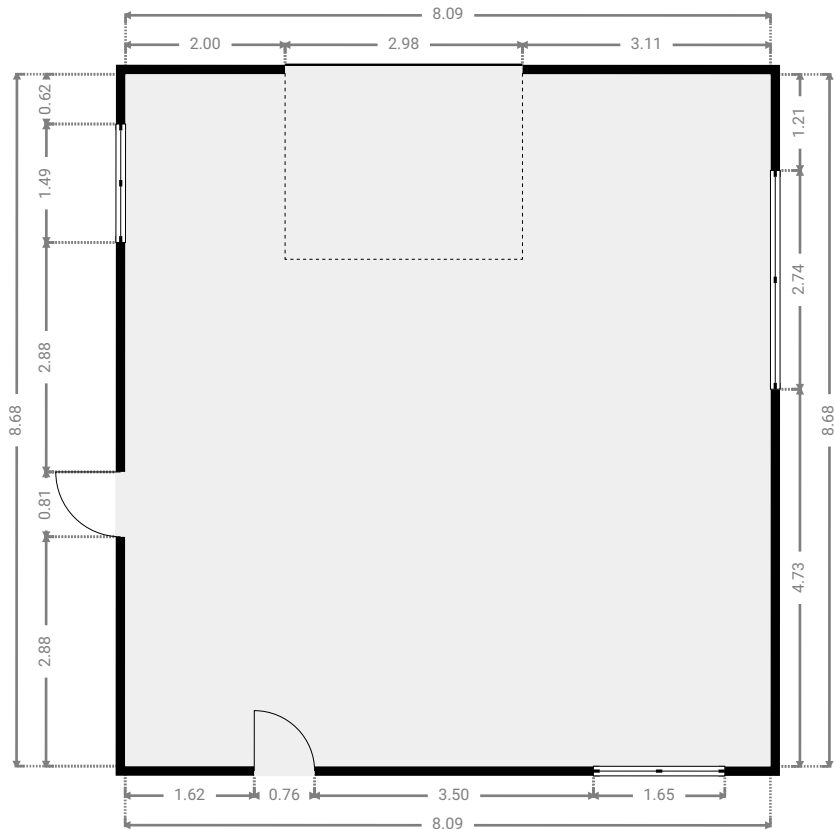
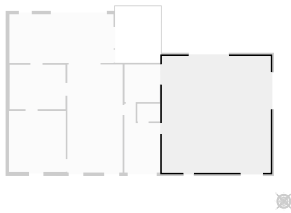




▼ **Terrasse**
Rez-de-chaussée

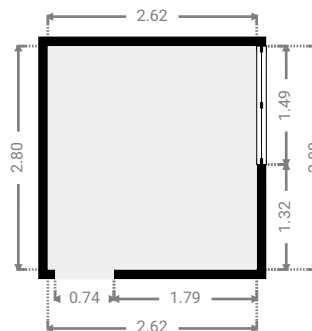
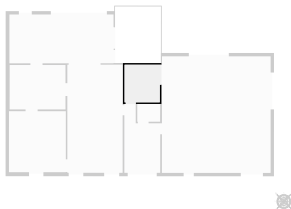
LARGEUR : 3.42 m • LONGUEUR : 4.22 m
SURFACE : 14.44 m² • PÉRIMÈTRE : 15.28 m



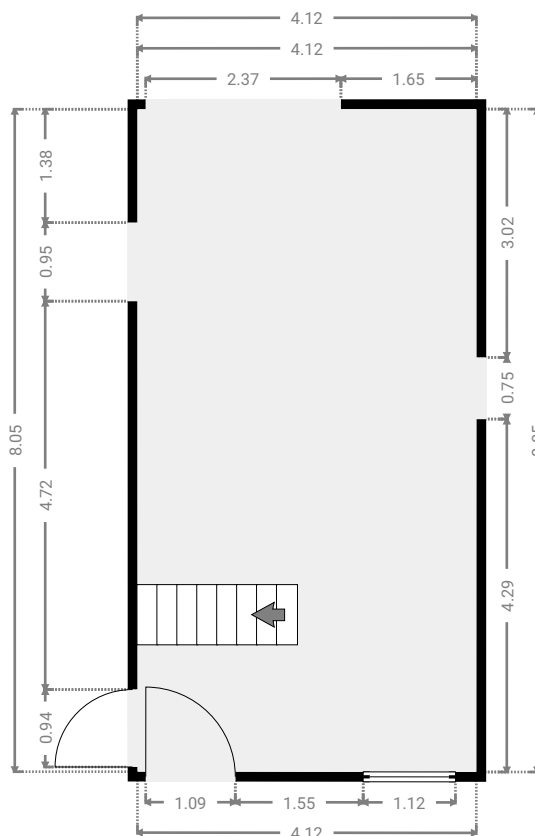
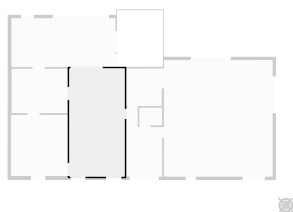


▼ **Salle de bains 1**
Rez-de-chaussée

LARGEUR : 2.62 m • LONGUEUR : 2.80 m
SURFACE : 7.34 m² • PÉRIMÈTRE : 10.85 m

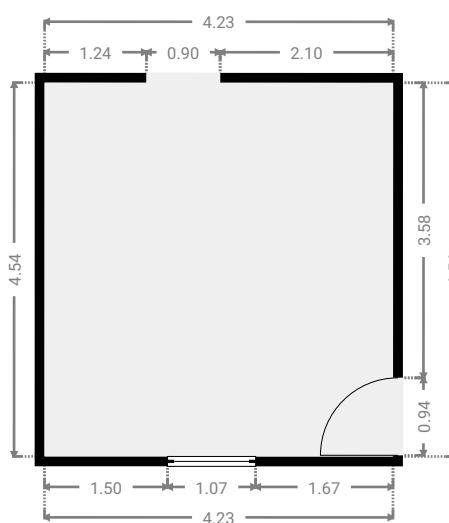


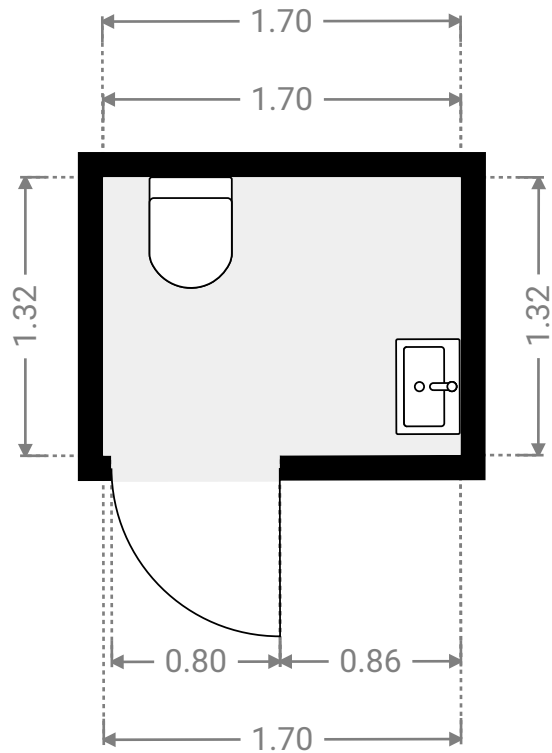
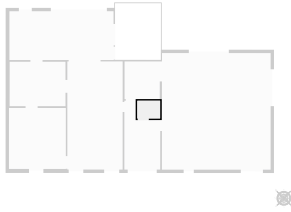
▼ **Salle à manger** We Invest En Fagne - DE L'ÉTAT 64
Rez-de-chaussée

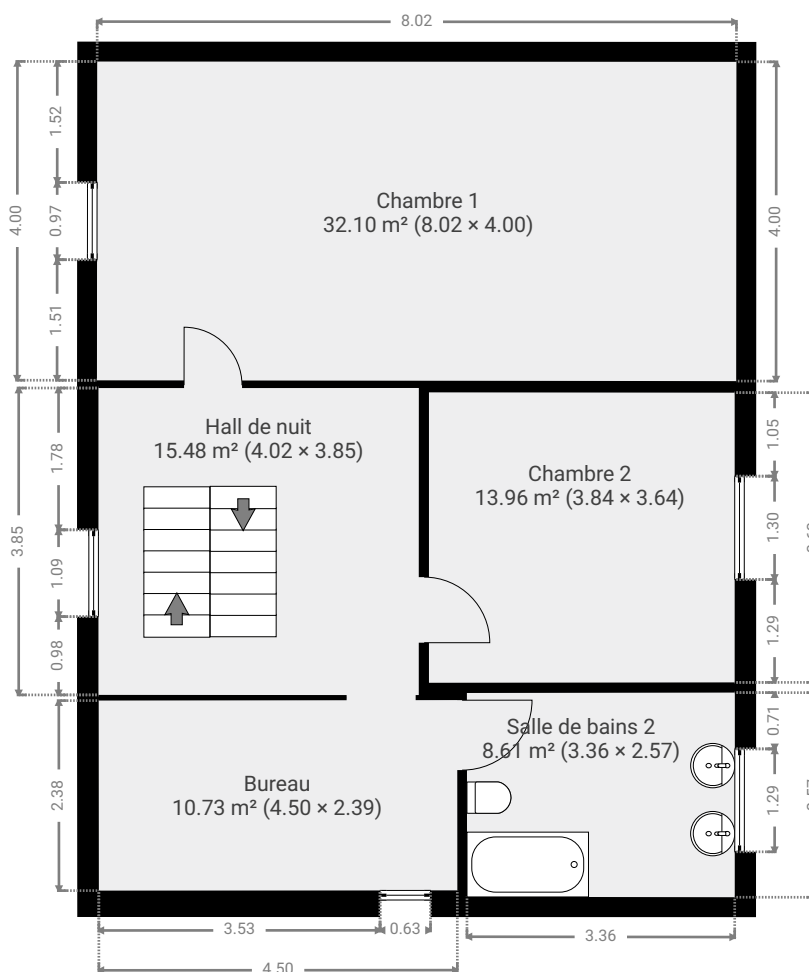


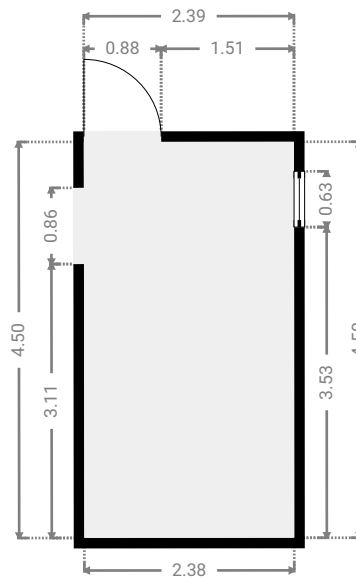
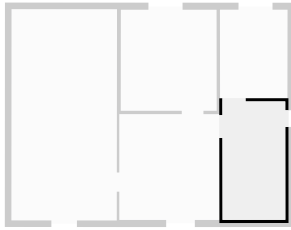
▼ **Salon**
Rez-de-chaussée

LARGEUR : 4.23 m • LONGUEUR : 4.54 m
SURFACE : 19.22 m² • PÉRIMÈTRE : 17.55 m



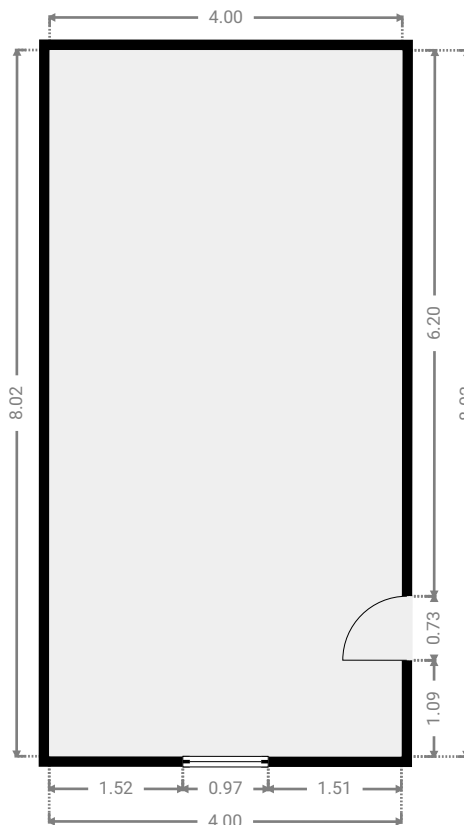
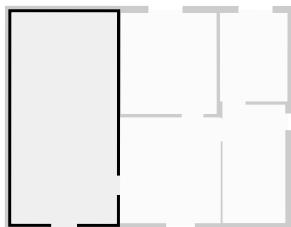


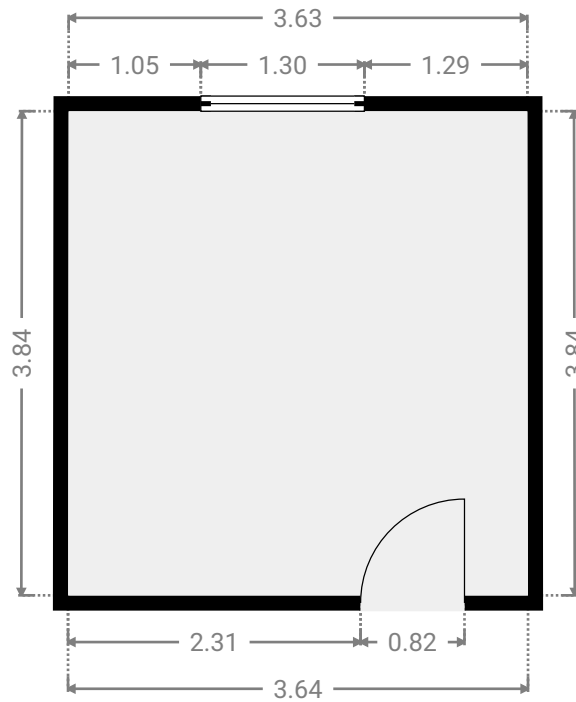
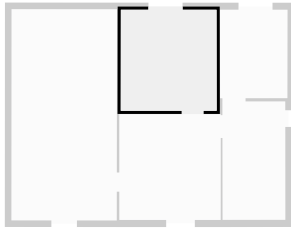




▼ Chambre 1
1er étage

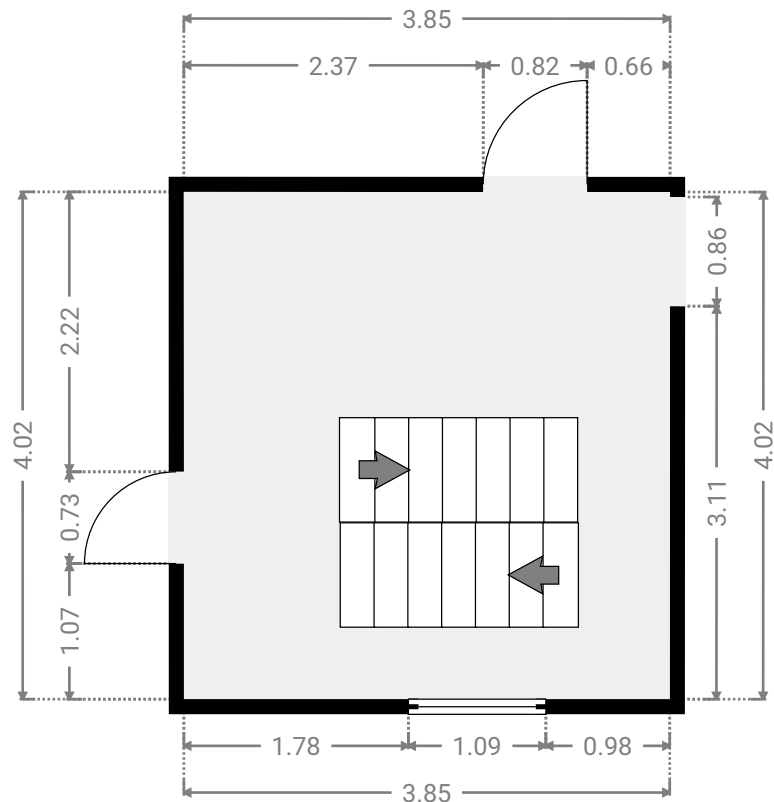
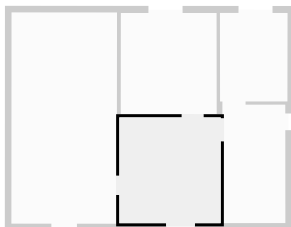
LARGEUR : 4.00 m • LONGUEUR : 8.02 m
SURFACE : 32.10 m² • PÉRIMÈTRE : 24.04 m

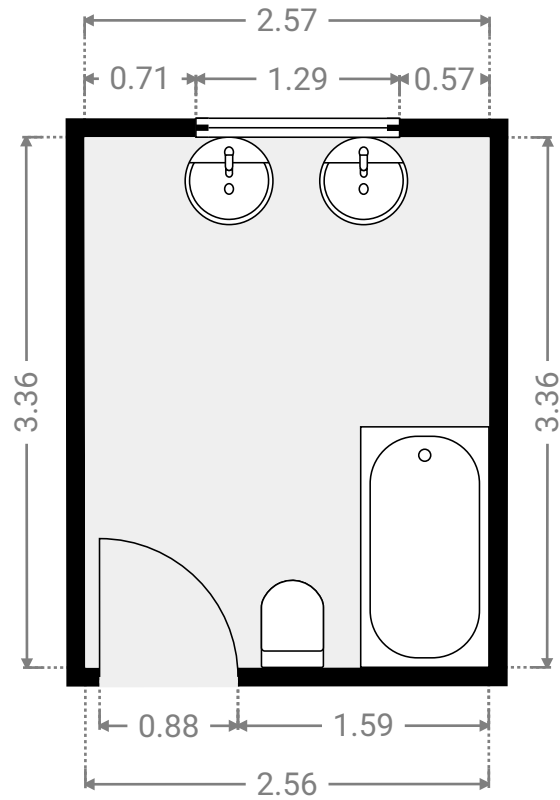
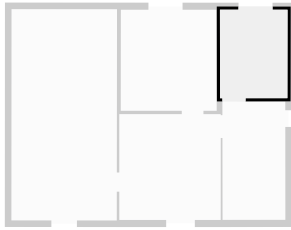


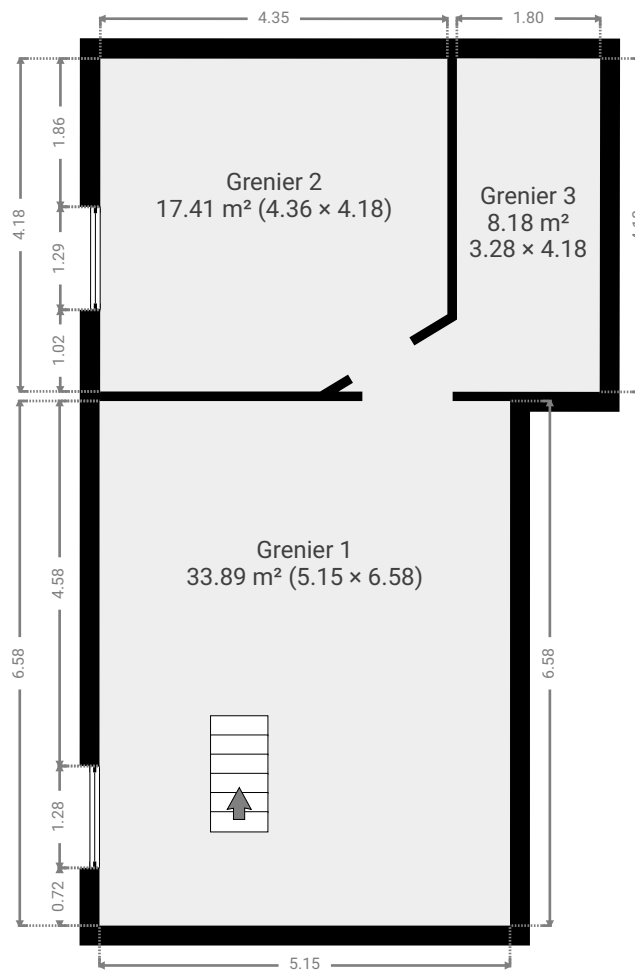


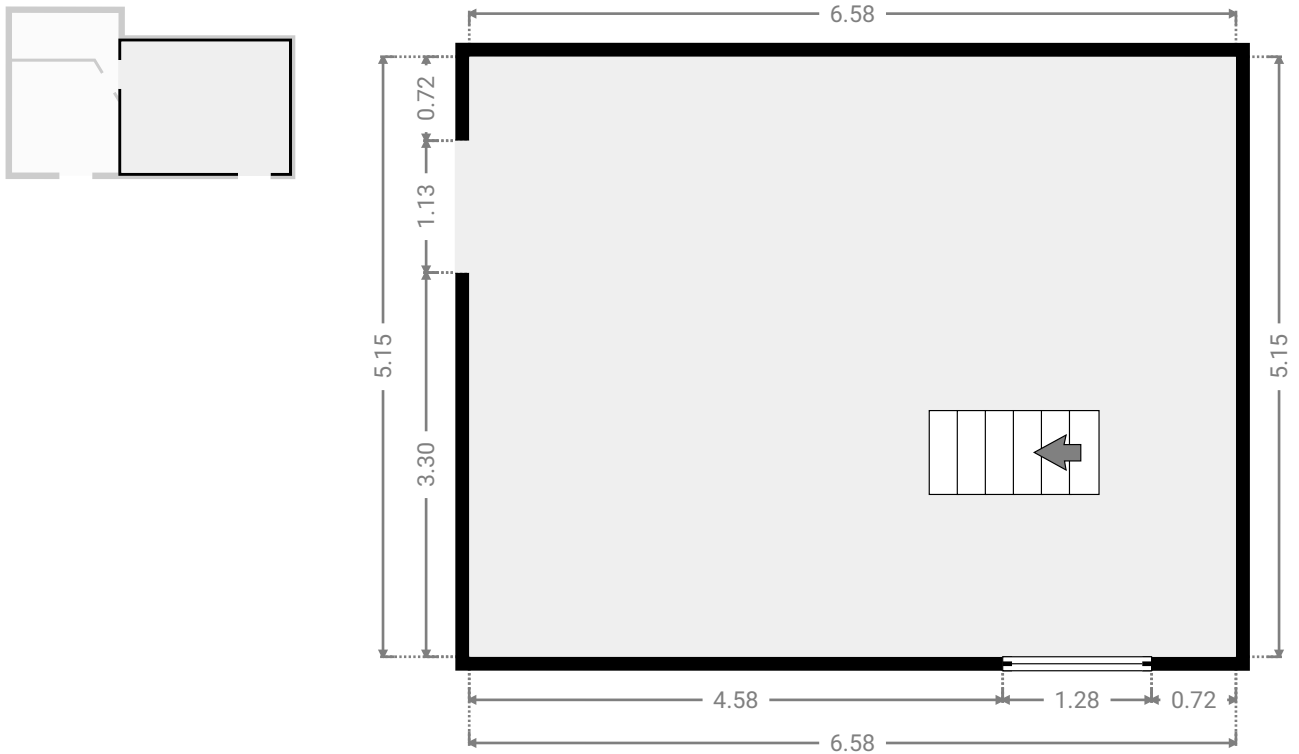
▼ **Hall de nuit**
1er étage

LARGEUR : 3.85 m • LONGUEUR : 4.02 m
SURFACE : 15.48 m² • PÉRIMÈTRE : 15.74 m









▼ Grenier 2
2e étage

LARGEUR : 4.18 m • LONGUEUR : 4.36 m
SURFACE : 17.41 m² • PÉRIMÈTRE : 16.36 m

