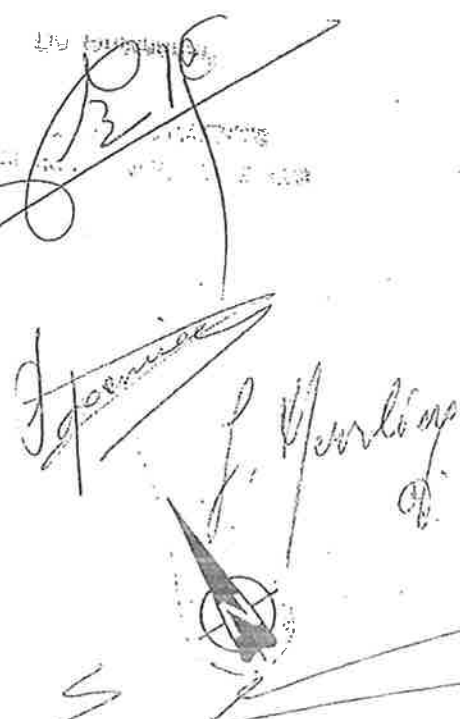


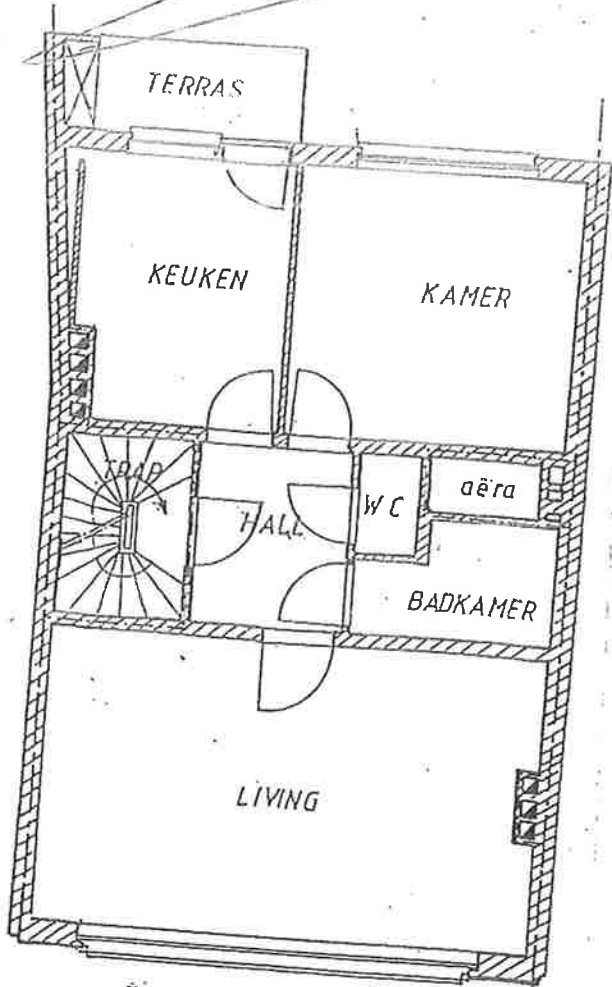
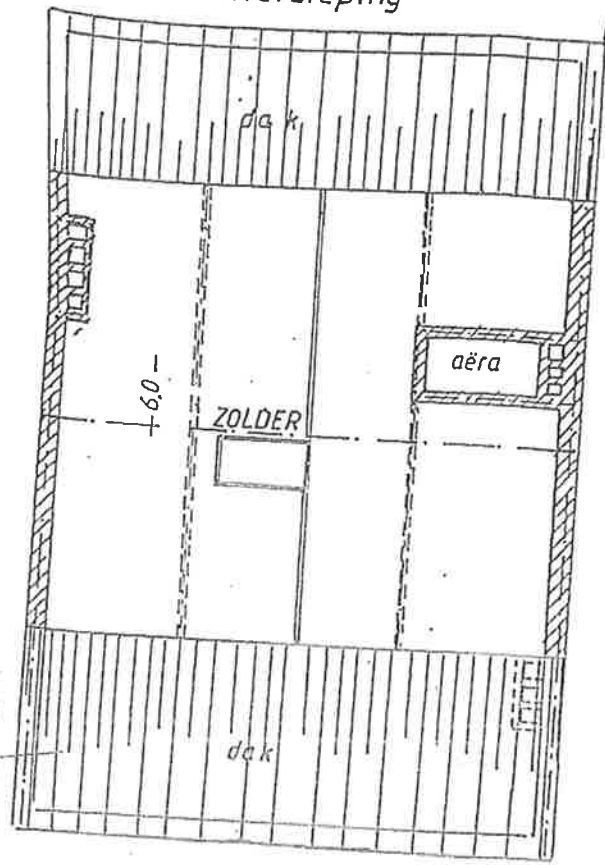
10 deuring November 1905
 Een hie... / ...landingen
 Sneek 6/12, die 35, van 7
 Ontvangen:

100
12

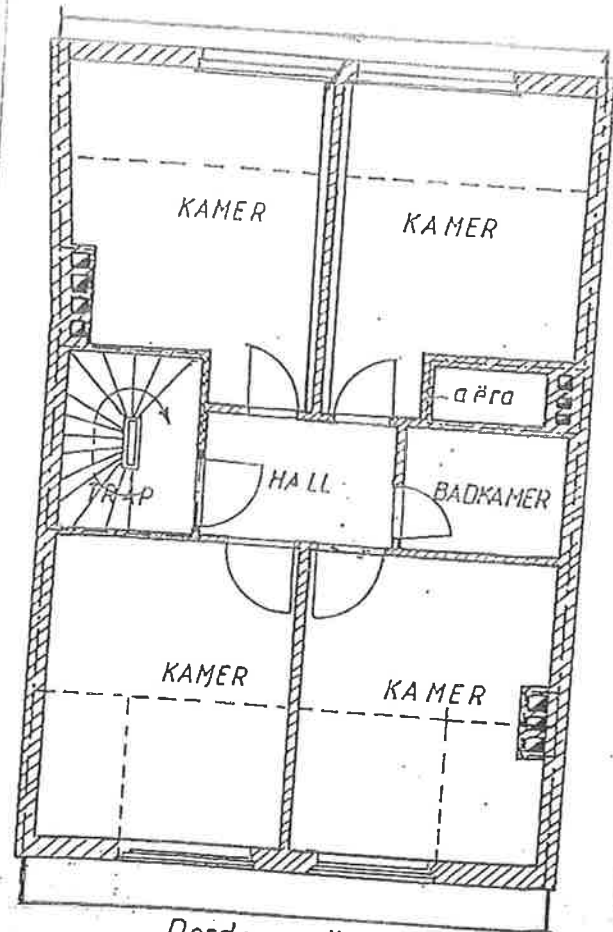
Gemeene delen



Dakverdieping



Tweede verdieping



Derde verdieping



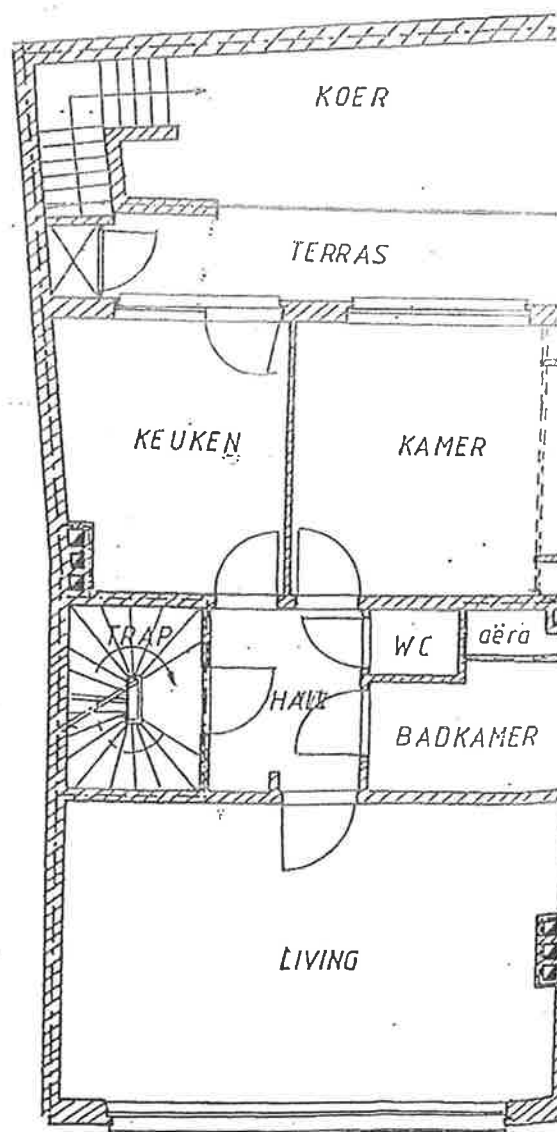
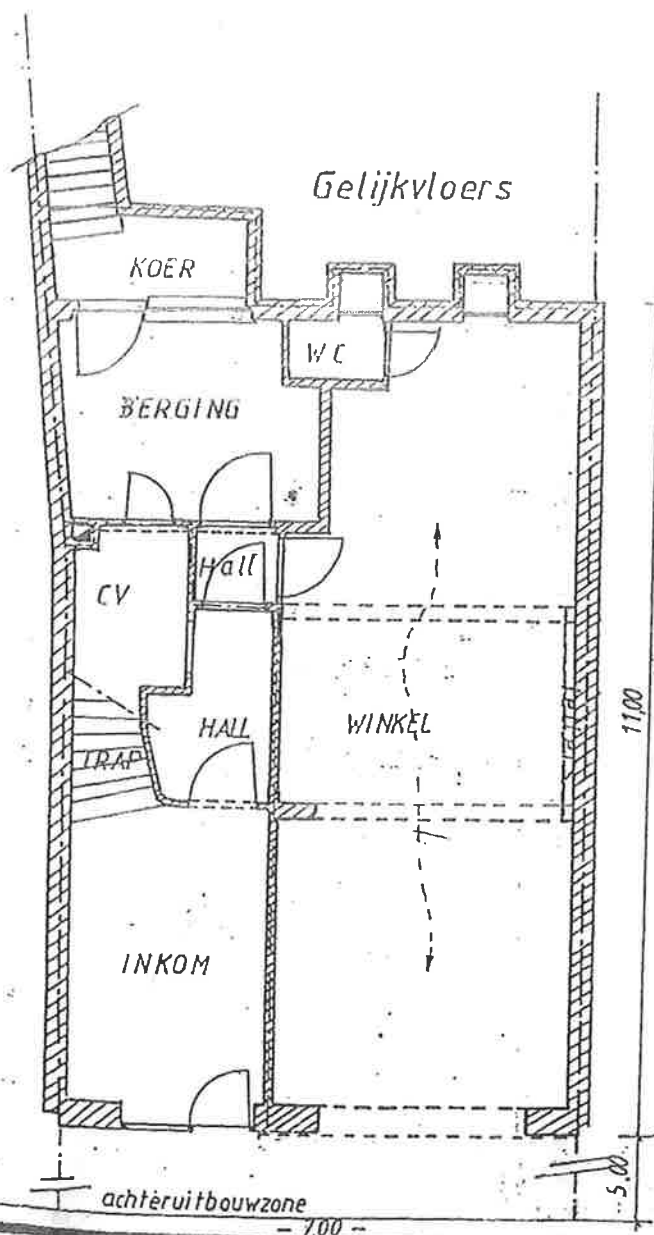
STAD BRUSSEL

Wannecouterlaan 141

18^e afdeling . sectie E nr. 170 c 6

Oppervlakte : 1 a 39 ca

Schaal : 1 / 100



Eerste verdieping